



www.locstar.com

Smart Lock User Manual

[TTlock Version]



Version : 20230612 V1.0

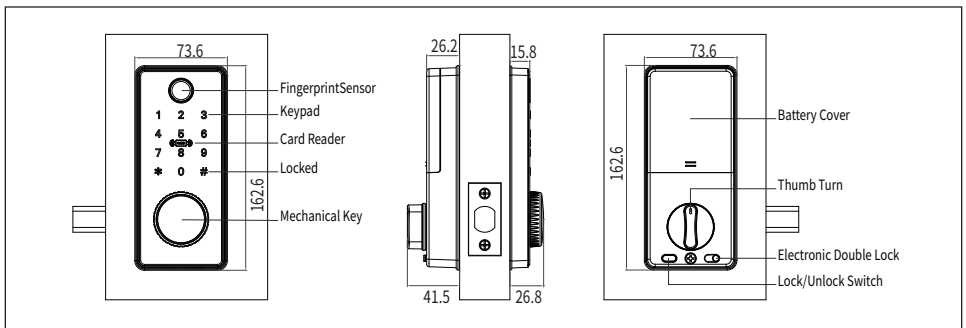
SHENZHEN LOCSTAR TECHNOLOGY CO.,LTD
Reserves the right to interpret this manual

I、Product introduction



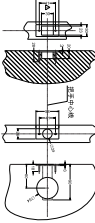



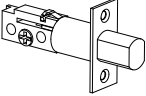


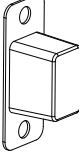
1、Product parameters

Bluetooth standard	Bluetooth 4.1ble	Key type	Capacitive touch button
Supported mobile phone	Android 4.3 /IOS 7.0 or above	IC cards Capacity	Mifare M1 card 200
Power supply mode	4 alkaline dry batteries	Unlocking Ways	App, password, fingerprint, IC card, mechanical key
Low voltage alarm	4.8V	Fingerprint head type	Semiconductor fingerprint head
Voltage range	4.5~6V	Fingerprint capacity	120 pieces
Standby current	65 microamps	FAR	<0.001%
Working current	Less than 200 Ma	FRR	<1.0%
Unlocking time	≈ 1.5 seconds	Passwords Capacity	Custom and permanent password 150
Operating temperature	-20 ~ 70 ° C		Other dynamic passwords 150

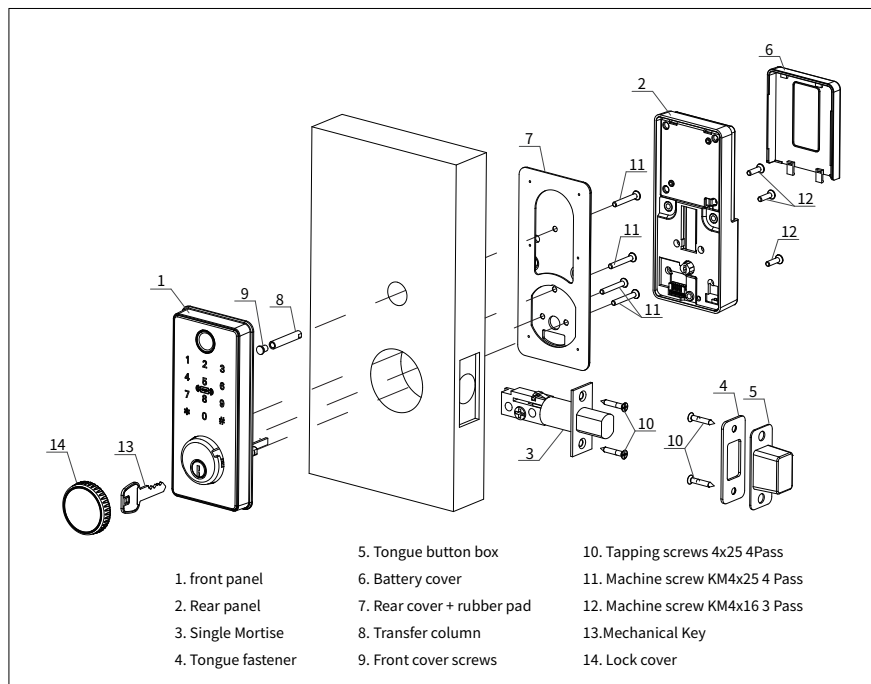
2、Product dimensions



3、Packing list (accessories in kind prevail, pictures are for reference only)

				
1.front panel	2.Back panel	3.opening size diagram	4.User Manual	5.Door gusset plate
				
6.Tapping screw	7.lock mortise	8.Installation screw	9.Mechanical keys	10.Latch box

4、Installation picture



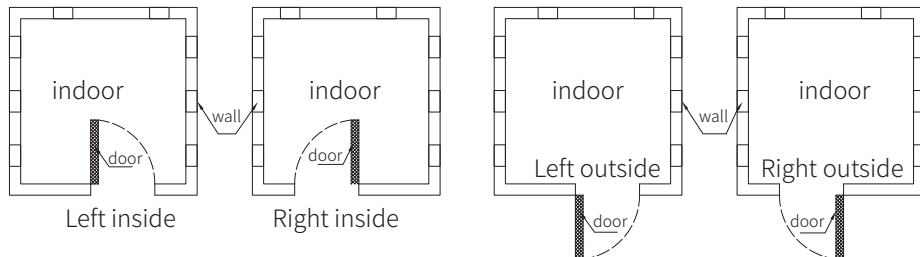
II 、Installation Guide

1、installation conditions

1.1、Door thickness

- Door lock border ≥ 110 mm (thickness of inconsistent doors)
- $45\text{mm} \leq \text{door thickness} \leq 120\text{mm}$ (custom accessories are required when size exceeded)

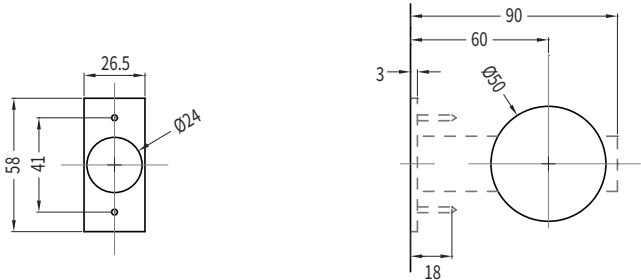
1.2、Opening direction



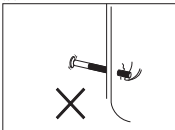
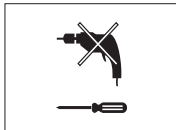

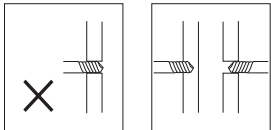
2. Installation tool (for reference only)

				
1.manual electric drill	2.pencil	3.tape ruler	4.hammer	5.bit
				
6.hacksaw	7.angle ruler	8.screwdriver	9.Cutter	10.chisel

3. Opening size diagram (for reference only)

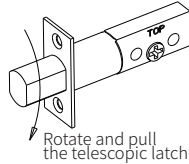
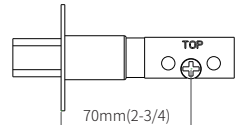
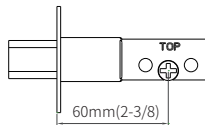
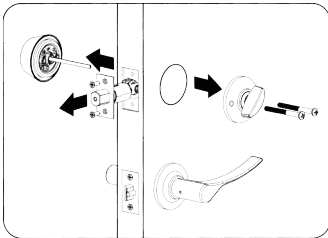


5. Installation Notes

<p>①</p> <p>In order to ensure successful installation, do not exert excessive force when tightening the screws, which may cause damage to the lock</p> 	<p>②</p> <p>Select correct screw tool</p> 	<p>③</p> <p>Wearing eye protection devices when opening doors to avoid eye injury</p> 	<p>④</p> <p>In order to prevent unnecessary damage to the door, when opening the door, please make the opening from both sides, remember to penetrate the opening on one side</p> 
--	---	---	--

6. Installation steps

1. Remove the old lock from the door.

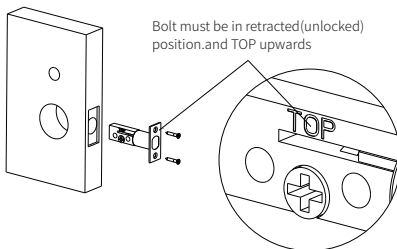


2. Adjust the length of the deadbolt if it is required.

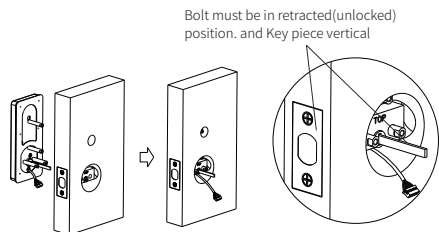
Note:

The deadbolt has TWO backset options: 70mm or 60mm, please adjust buy yourself.

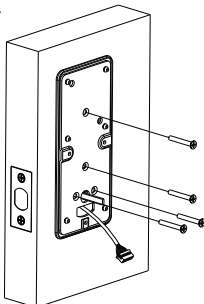
3. Install the deadbolt on the door.



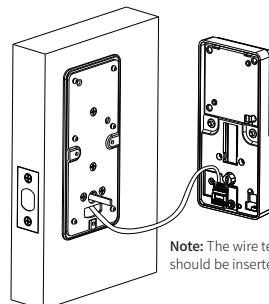
4. Hold the front body to the door, and cable through the door hole.



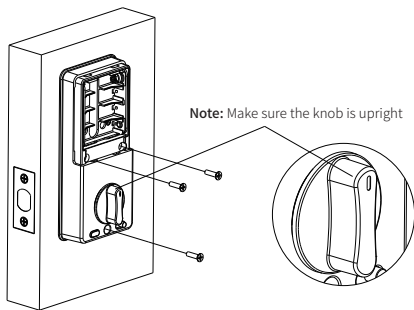
5. Pass the connecting wire of the front panel through the outlet hole of the rear fixing plate, and fix the front panel and the rear fixing plate with 4 screws.



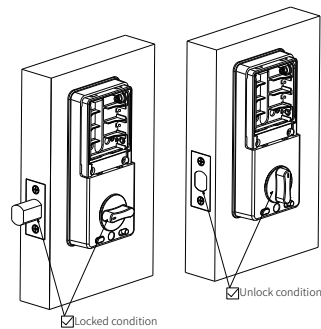
6. Connect the front panel connecting cable to the back panel.



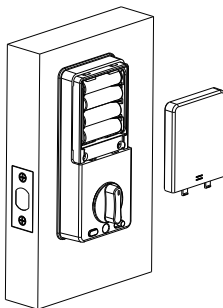
7、Fix the rear panel with three M4x16 screws. Make sure the twist is vertical.



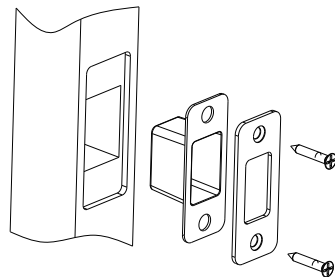
8. Rotate knob by hand.



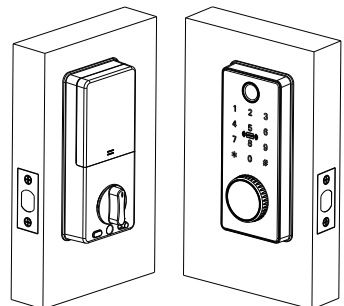
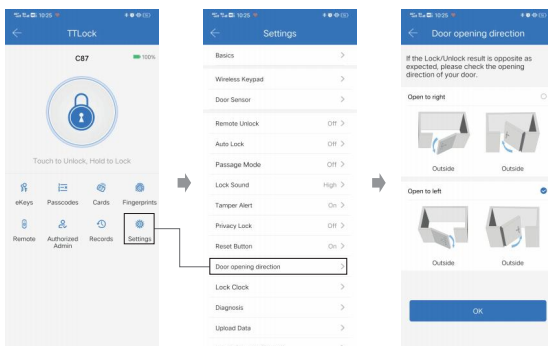
9. Install the battery, pay attention to the positive and negative direction of the battery. Finally, install the battery cover finally.



10. Install door buckle box and door buckle plate.



11、According to the direction of the door, use the mobile APP to adjust the setting of the door lock unlock direction, and then test whether the functions of the door lock are normal.



3.6 Restore factory settings

3.6.1. Press and hold the reset and clear button on the 10s rear panel, the door lock will return to the factory default, and the voice and light will be restored successfully.

3.6.2. The factory default password is 123456, all fingerprint password card registration are cleared, and the operation record remains unchanged.



3.7 Low voltage alarm and battery replacement method

3.7.1 Battery Low voltage alarm

When the battery is low-voltage, when unlock by fingerprint / password / card, and the door lock voice prompts "the voltage is too low, please replace the battery".

3.7.2 Battery replacement method

Take out the old battery, put the new battery into the battery box according to the positive and negative pole alignment, and install the battery cover into the back panel after the power is normal.



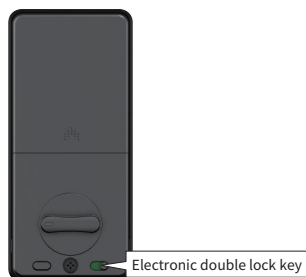
3.8 USB emergency power supply and mechanical key unlock

When the battery has no power, use 5V power bank +micro USB cable and connect the micro USB port of the external emergency power supply to unlock normally, or use the mechanical key to unlock.



3.9 Electronic anti lock function

When the electronic anti lock key is pushed upward, it is locked, and when it is pushed downward, it is unlocked.





TTLOCK App Manual



Scan to download The App

Please read the manual carefully before installation and keep this manual at a secure place.

- Please refer to sales agents and professionals for information not included in this manual.

Introduction

The App is a smart lock management software developed by Hangzhou Sciener Intelligent Control Technology Co., Ltd. It includes door locks, parking locks, safe locks, bicycle locks, and more. The App communicates with the lock via Bluetooth BLE, and can unlock, lock, firmware upgrade, read operation records, etc. The Bluetooth key can also open the door lock through the watch. The app supports Chinese, Traditional Chinese, English, Spanish, Portuguese, Russian, French, and Malay.



contents

1. registration and login

- 1.1 security question settings
- 1.2 login authentication
- 1.3 ways of identifying
- 1.4 login successful

2. lock management

- 2.1 lock adding
- 2.2 lock upgrading
- 2.3 error diagnosis and time calibration
- 2.4 authorized administrator

3. key management

- 3.1 key management
- 3.2 deadline warning
- 3.4 search lock record

5. card management

6. fingerprint management

9. system setting

- 9.1 user management
- 9.2 group management settings
- 9.3 transfer admin rights
- 9.4 recycle bin
- 9.5 customer service
- 9.6 about

4. passcode management

- 4.1 permanent passcode
- 4.2 time-limited passcode
- 4.3 one-time passcode
- 4.4 clear code
- 4.5 cyclic passcode
- 4.6 customized passcode
- 4.7 passcode sharing
- 4.8 passcode management

7. bluetooth unlocking

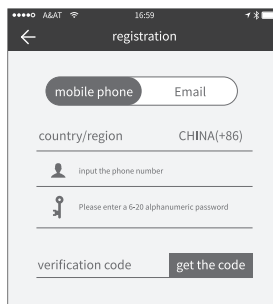
8. attendance management

10. gateway management

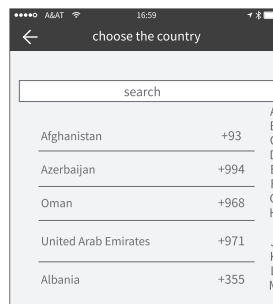
- 10.1 gateway adding
- 10.2 manual

1. registration and login

Users can register the account by mobile phone and Email which currently support 200 countries and regions on the world. The verification code will be sent to user's mobile phone or email, and the registration will be successful after the verification.



The screenshot shows a mobile app interface for registration. At the top, there's a back arrow and the title 'registration'. Below this, there are two tabs: 'mobile phone' (selected) and 'Email'. Under the 'mobile phone' tab, there's a field for 'country/region' with 'CHINA(+86)' selected. Below that is a field for 'input the phone number' with a person icon. Then, there's a field for 'Please enter a 6-20 alphanumeric password' with a key icon. At the bottom, there's a 'verification code' field and a 'get the code' button.



The screenshot shows a mobile app interface for choosing a country. At the top, there's a back arrow and the title 'choose the country'. Below this is a search bar. Under the search bar, there's a list of countries with their corresponding phone codes: Afghanistan (+93), Azerbaijan (+994), Oman (+968), United Arab Emirates (+971), and Albania (+355). On the right side of the list, there's a vertical index from A to M.

1.1 security question settings

You will be taken to the security question settings page when registration is successful. When log in on a new device, the user can authenticate himself by answering the above questions.

Security question settings

✓ successful

It can be verified by answering questions when logging in to a new device

Question one >
input your answer

Question two >
input your answer

Question three >
input your answer

next step

choose a question

Which city did you go to on the first flight?

What is your QQ number?

What is your pet's name?

cancel

security question settings

It can be verified by answering questions when logging in to a new device

Which city did you go to on the first flight? >
input your answer

What is your QQ number? >
input your answer

What is your pet's name? >
input your answer

next step

1.2 login authentication

Log in with your mobile phone number or email account on the login page. The mobile phone number is automatically recognized by the system and does not input the country code. If you have forgotten your password, you can go to the password page to reset your password. When reset the password, you can receive a verification code from your mobile phone and email address.

login register

mobile phone/ Email

passcode

Login

Forgot Password?

Retrieve password

mobile phone/Email

passcode

Verification code get the code

reset the passcode

When the account is logged in on the new mobile phone, it needs to be verified. When it is passed, you can log in on the new mobile phone. All the data can be viewed and used on the new mobile phone.

register

input verification code here

get the code

You are logging in to a new device. For account security, please conduct safety certification.

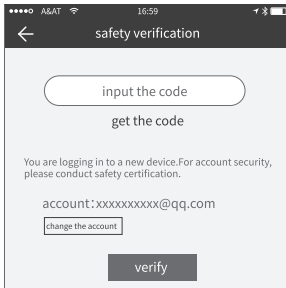
Admission fee: xxxxxxxxxxxx

replace receiving account replace verification method

1.3 ways of identifying

There are two ways of security verification. One is the way to get the verification code via the account number, and the other is the way to answer the question. If the current account is set the "answer the question" verification, then when the new device is logged in, there will be an "answer question verification" option.

Verify with verification code



input the code

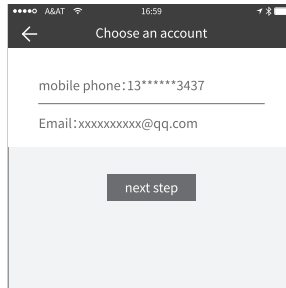
get the code

You are logging in to a new device. For account security, please conduct safety certification.

account:xxxxxxxxx@qq.com

change the account

verify



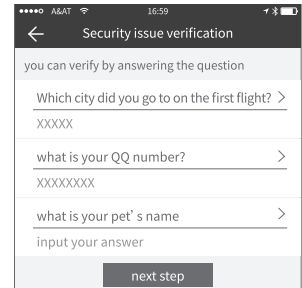
Choose an account

mobile phone: 13*****3437

Email: xxxxxxxxxx@qq.com

next step

verify by answering questions



Security issue verification

you can verify by answering the question

Which city did you go to on the first flight? >

XXXXX

what is your QQ number? >

XXXXXXXXX

what is your pet's name >

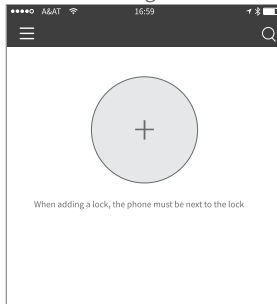
input your answer

next step

1.4 login successful

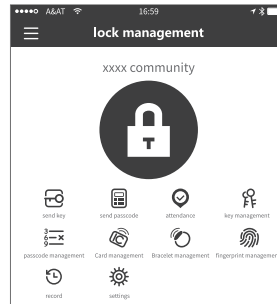
The first time you use the lock lock app, if there is no lock or key data in the account, the home page will display the button to add the lock. If there is already a lock or key in the account, the lock information will be displayed.

no lock adding



When adding a lock, the phone must be next to the lock

the account with lock



lock management

xxxx community

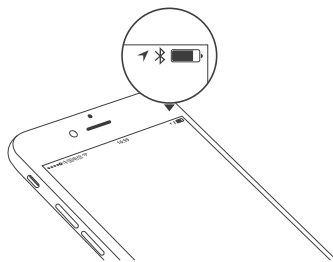
send key, send passcode, attendance, key management, passcode management, Card management, Bracelot management, fingerprint management, record, settings

2. lock management

The lock must be added on the app before it can be used. The addition of a lock refers to the initialization of the lock by communicating with the lock via Bluetooth. Please stand beside the lock. Once the lock is added successful, you can manage the lock with the app including sending a key, sending a password, and so on.

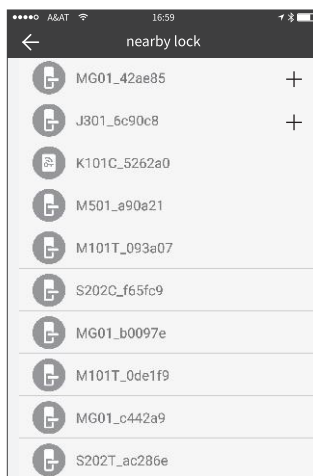
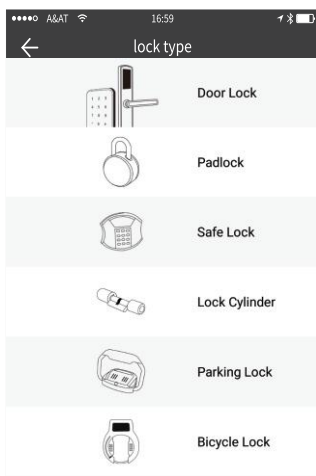


When the lock is added, the adder becomes the administrator of the lock. At the same time, the lock cannot enter the setup mode by touching the keyboard. This lock can only be re-added after the current administrator has deleted the lock. The operation of deleting the lock needs to be done by Bluetooth beside the lock.

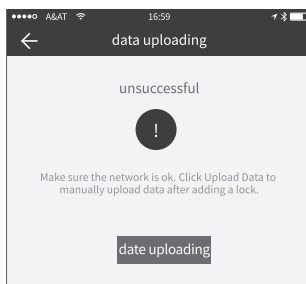
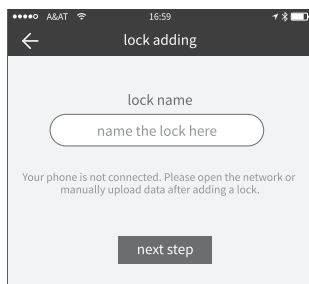


2.1 lock adding

The App supports multiple types of lock, including door locks, padlocks, safe locks, smart lock cylinders, parking locks, and bicycle locks. When adding a device, you must firstly select the lock type. The lock needs to be added to the app after entering the setting mode. A lock that has not been added will enter the setting mode as long as the lock keyboard is touched. The lock that has been added needs to be deleted on the App first.

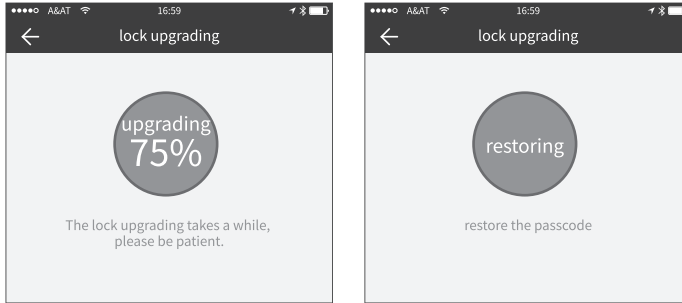


The initialization data of the lock needs to be uploaded to the network. The data needs to be uploaded when the network is available to complete the entire whole adding process.



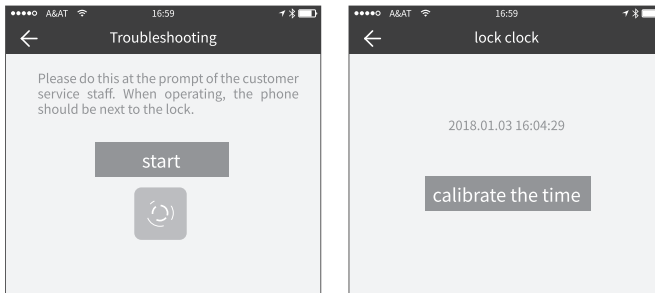
2.2 lock upgrading

User can upgrade the lock hardware on the APP. The upgrade needs to be done via Bluetooth next to the lock. When the upgrade is successful, the original key, password, IC card, and fingerprint can continue to be used.



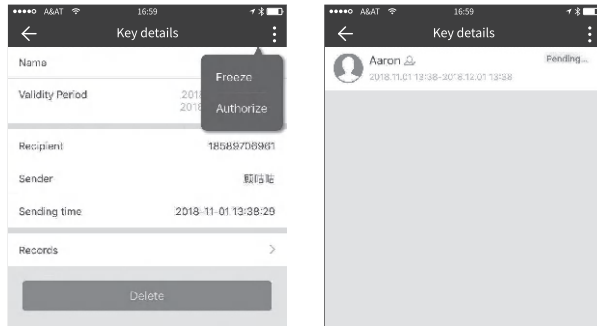
2.3 error diagnosis and time calibration

Error diagnosis aims to help analyse the system problems. It needs to be done via Bluetooth beside the lock. If there is a gateway, the clock will be calibrated firstly through the gateway. If there is no gateway, it needs to be calibrated by the mobile phone Bluetooth.



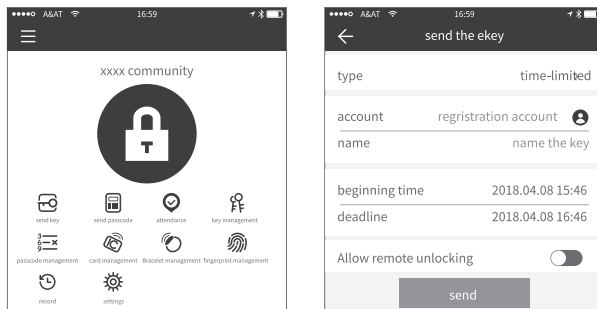
2.4 Authorized administrator

Only the administrator can authorize the key. When the authorization is successful, the authorized key is consistent with the administrator's interface. He can send keys to others, send passwords, and more. However, the authorized administrator can no longer authorize others.



3. key management

After the administrator successfully adds the lock, he owns the highest administrative rights to the lock. He can send keys to others. Meanwhile he can increase the key management that is about to expire.



Click the type of lock it will show the time-limited ekey, one-time ekey and permanent ekey.

Time-limited ekey: The ekey is valid for the specified time

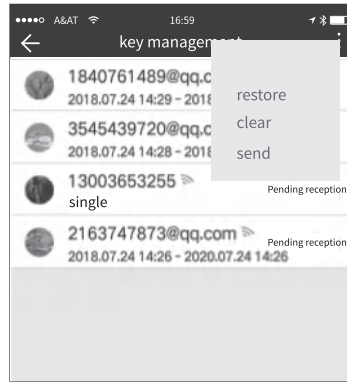
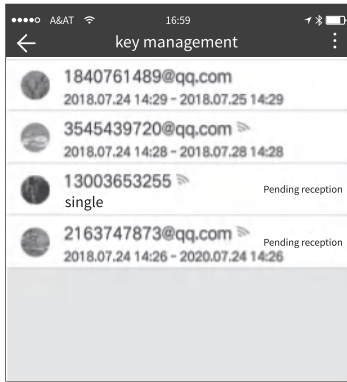
Permanent ekey: The ekey can be used permanently.

One-time ekey: the ekey will be automatically deleted once it has been used.

lock type
time-limited key
permanent key
single key
cancel

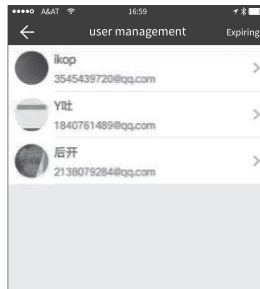
3.1 key management

The manager can delete ekey, reset ekey, send and adjust the ekey, meanwhile he can search the lock record



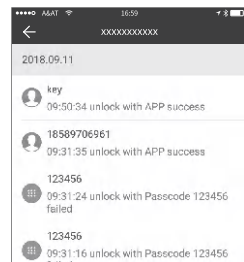
3.2 deadline warning

System will show two colors for deadline warning. The yellow means close to expiring and the red means it has expired.



3.3 search lock record

The administrator can query the unlock record of each key.

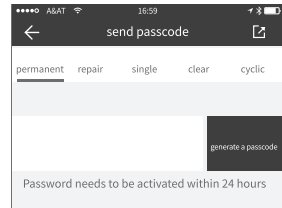


4. passcode management

After inputting the passcode on the keyboard of the lock, press the unlock button to unlock. Passcodes are classified into permanent, time-limited, one-time, empty, loop, custom, etc.

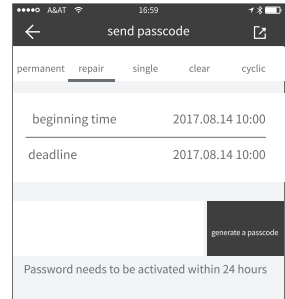
4.1 permanent passcode

The permanent passcode must be used within 24 hours after it is generated, otherwise it will automatically expire.



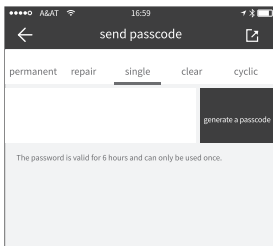
4.2 time-limited passcode

The time-limited passcode can own an expiration date, which is a minimum of one hour and a maximum of three years. If the validity period is within one year, the time can be accurate to the hour; if the validity period is more than one year, the accuracy is month. When the time-limited passcode is valid, it should be used within 24 hours, otherwise it will automatically expire.



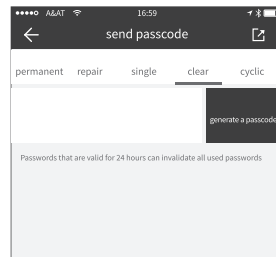
4.3 one-time passcode

One-time passcode can only be used for one time, and which is available for 6 hours.



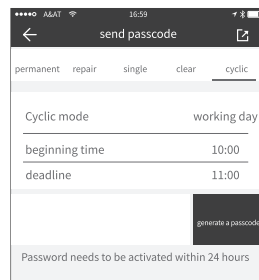
4.4 clear code

Clear code is used to delete all the passcodes the lock has set, and which is available for 24 hours.



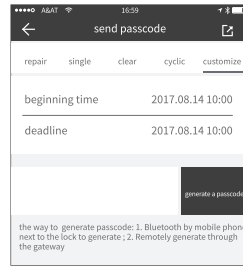
4.5 cyclic passcode

The cyclic password can be reused within a specified time period, including daily type, weekday type, weekend type, and more.



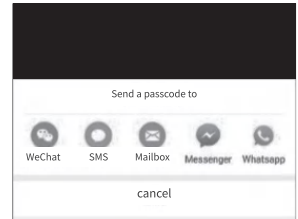
4.6 custom passcode

User can set any passcodes and validity period he wants.



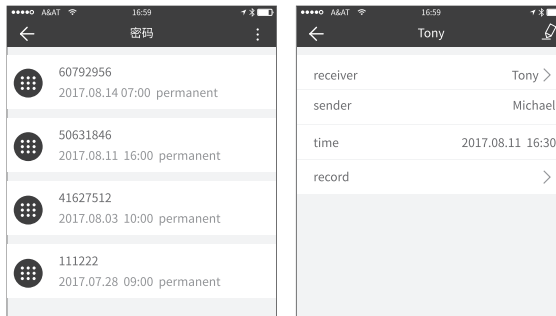
4.7 passcode sharing

The system add new communication ways of Facebook Messenger and Whatsapp to help users share the passcode.



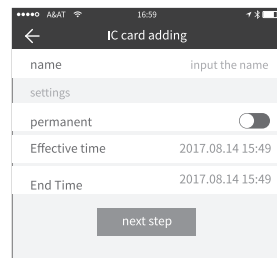
4.8 passcode management

All generated passcodes can be viewed and managed in the password management module. This includes the right of changing the password, deleting the password, resetting the password, and unlocking the password.

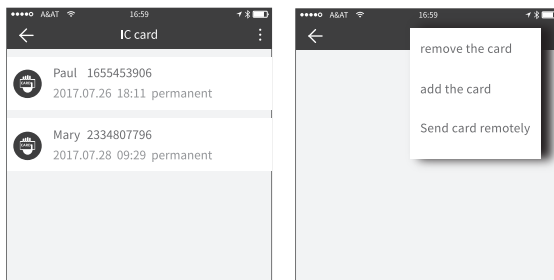


5. card management

You need to add the IC card first. The whole process needs to be done via the app beside the lock. The validity period of the IC card can be set, either permanent or time-limited.



All IC cards can be queried and managed through the IC card management module. The remote card issuance function is displayed in the case of a gateway. If there is no gateway, the item is hidden.

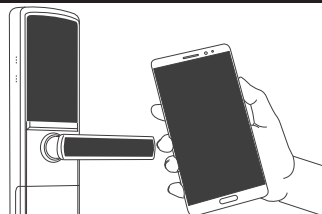


6. fingerprint management

Fingerprint management is similar to IC card management. After adding a fingerprint, you can use the fingerprint to unlock the door.

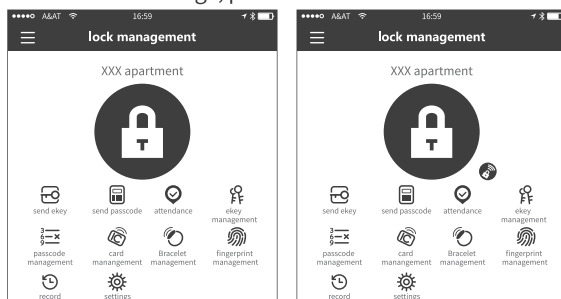
7. unlock via Bluetooth

App User can lock the door via Bluetooth and can also send the Bluetooth ekey to anyone.



• unlock by App

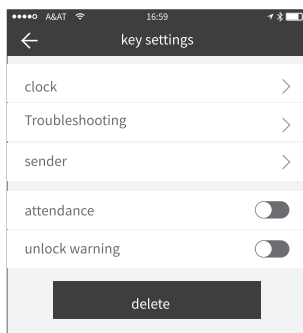
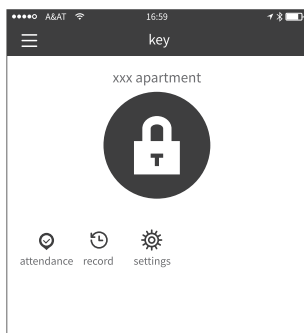
Click the round button at the top of the page to unlock the door. Since the Bluetooth signal has a certain coverage, please use the APP within the certain area.



8. attendance management

The APP is access control, which can be used for company attendance management. The app contains functions of employee management, attendance statistics and so on.

All 3.0 door locks have attendance functions. The normal door lock attendance function is turned off by default. The user can turn it on or off in the lock settings.

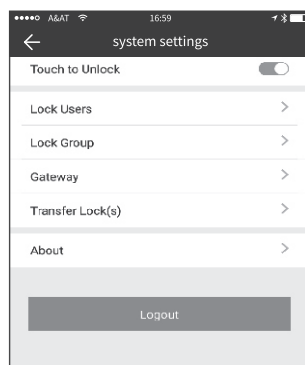


9. system setting

In the system settings, it includes touch unlock switch, group management, gateway management, security settings, reminder, transfer smart lock and so on.

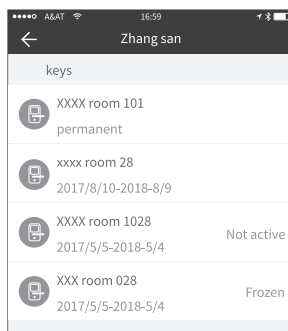
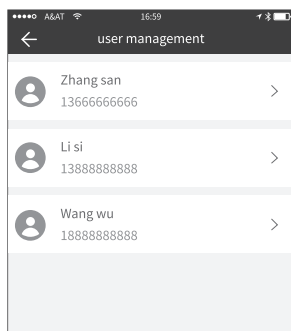


Touch unlock setting determines whether you can open the door by touching the lock.



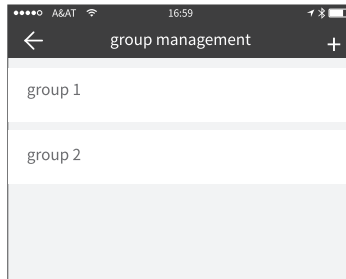
9.1 user management

The user name and phone number can be seen in the user list. Click the customer you want to view to get the door lock information



9.2 key groups management

In the case of a large number of keys, you can use group management module.

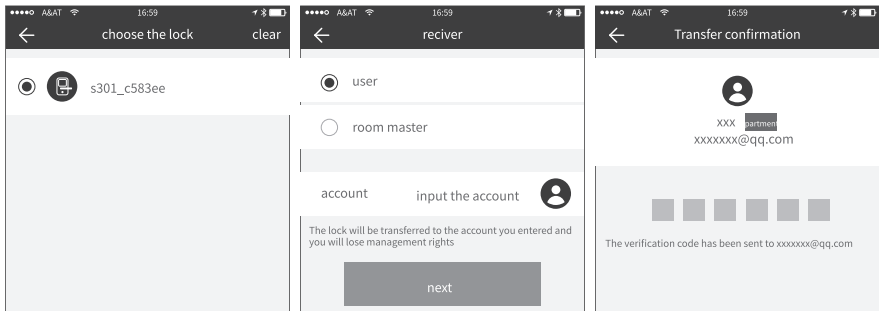


9.3 transfer admin rights

The administrator can transfer the lock to other users or to the apartment (Room Master user). Only the account that manages the lock has the right to transfer the lock.

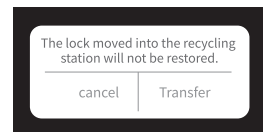
After inputting the account, you will receive a verification code. Filling in the correct number, you will transfer successfully.

... The account of the apartment transfer receive must be the administrator account.



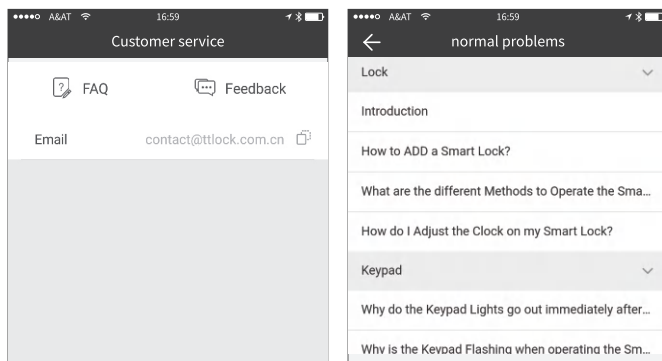
9.4 Lock recycling station

If the lock is damaged and cannot be deleted, the lock can be deleted by moving it into the recycling station.



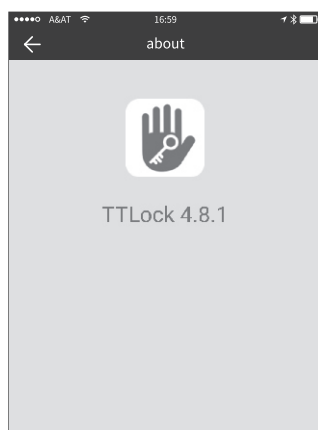
9.5 Customer service

The user can consult and give feedback through the AI customer service



9.6 about

In this module you can check the app version number.



10. gateway management

The Smart lock is directly connected via Bluetooth, that is why it is not attacked by the network. The gateway is a bridge between smart locks and home WIFI networks. Through the gateway, the user can remotely view and calibrate the lock clock, read the unlock record. Meanwhile, it can remotely delete and modify the password.



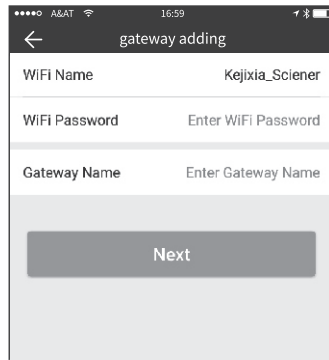
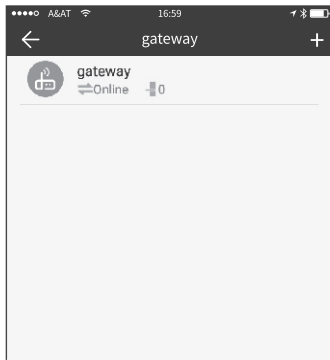
10.1 gateway adding

Please add the gateway via APP:

A Connect your phone to the WIFI network which the gateway is connected to.

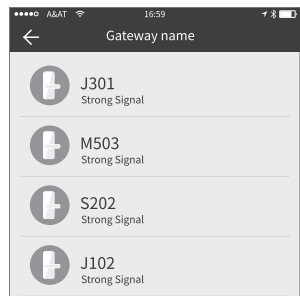
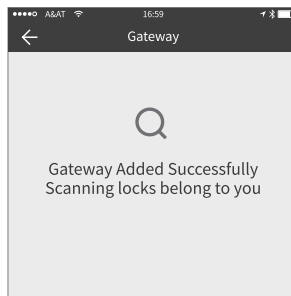
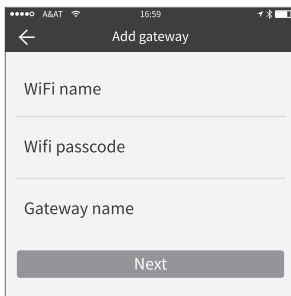
B Click the plus button in the upper right corner and input the WIFI passcode and gateway name. Click OK and input the passcode for authentication.

C Press and hold the setting button on the gateway for 5 seconds. The green light indicate that the gateway has entered the add-on mode.



10.2 manual

After a short period of time, you can see which locks are in their coverage in the app. Once the lock is bound to the gateway, the lock can be managed through the gateway.



◦ Warranty Card ◦

1. The manual and warranty card are included in the factory default packaging for each product. After installation, please fill in the warranty card and keep it properly as the warranty certificate.
2. Full grantee: 1 year
3. The following are not covered by the warranty:
 - A. Damage caused by accidental factors or human behavior and external forces including violent tampering, un-suitable voltage inputted.
 - B. Force majeure caused by natural disasters, such as earthquake, fire, flood etc
4. We charge corresponding fees for those beyond the warranty scope.
5. If the product fails, please contact the local distributor for repair, and write down the specific address, name, telephone number and fault phenomenon.

Product info	Product Name	
	Product Model No.	
	Purchase Price	
	Purchase Date	
User Info	User Name	
	User Phone No.	
	Delivery Address	
	Post code	
Distributor Info	Distributor	
	Address	
	Phone No.	
	Invoice No.	
	Distributor Chop	

Maintenance Record

(Filled in by the maintenance staff)

Maintenance Date	Fault Phenomenon	Maintenance Record	Authorized Maintenance Chop